

Double socket outlet SCHUKO

1632760




General information

Item number	1632760
Model	Double socket outlet
Colour	grey

Electrical parameters

Amperage	16A
Voltage	250V
Poles	2P + PE

Standards/Directives

According to	DIN VDE 0620
Standard	SCHUKO
Certification marks	

Operating conditions

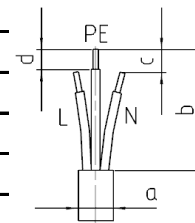
Storage temperature	-25°C to +70°C
Operating temperature	-25°C to +40°C
Relative humidity	5 to 95%, no condensation
Degree of protection	IP 67 closed, suitable for wet cleaned rooms

Materials

Contact Carrier	PA
Housing	PA

Connecting cable

Cross section	3x1,5mm ² -3x2,5mm ²
Cable diameter, dimension a	6-12mm
Insulation strip length sheath, dimension b	-
Trim L/N, dimension c	-
Insulation strip length cores, dimension d	8-10mm



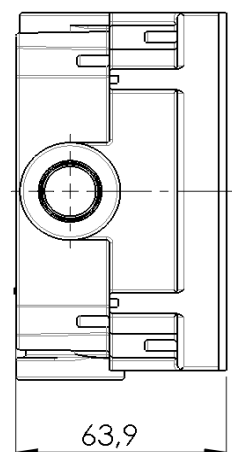
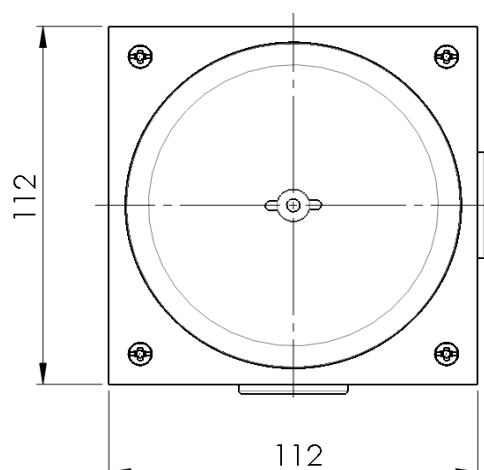
Connection screws

Max. torque for screws L-N/PE	0,5 Nm
Screw drive L-N/PE	Combined slot/PZ1
Max. torque for screws housing	1Nm
Screw drive housing	Combined slot/PZ1

Additional technical information

Note	Cover with lid made of zinc die-casting, lower part made of thermoplastic with 4x cable entry M20. Lid drive :electrical cabinet key
------	--

Subject to modifications



If the application requires extended specifications, we recommend to test the application under real or simulated conditions. Parameters like duration, quantity and temperature will effect the result significantly